

mesoestetic®

research
technology
medical experience

cellulishock®

cellulishock®

professional treatment

Dynamic anti- cellulite treatment

mesoestetic[®]

research
technology
medical experience

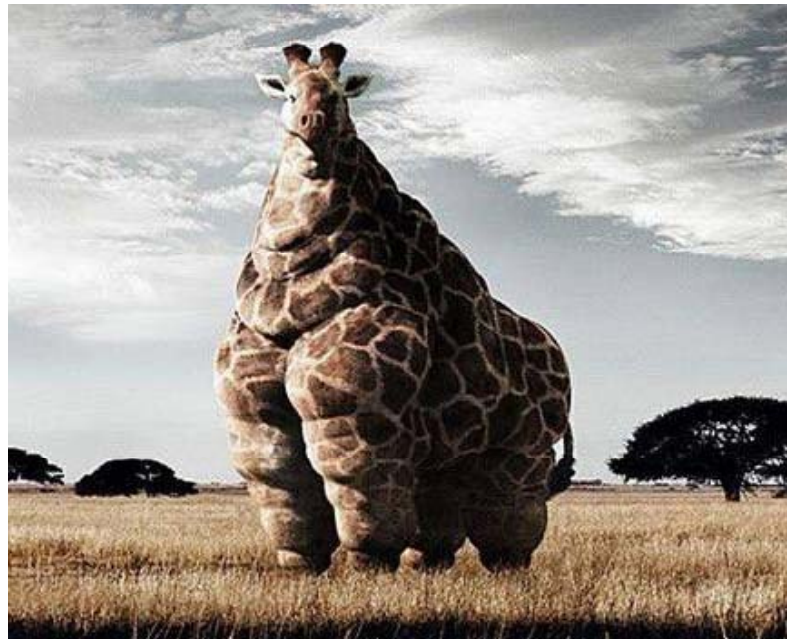
cellulishock[®]

Body disorders

Obesity

Excess of adipose tissue (fat) conditioning a risk for live

Physiologically water & fat constitute approximately 50 & 20 % of the body mass



Body disorders

Obesity

Body mass index (BMI)

$$\text{BMI} = \frac{\text{Weight (Kg)}}{[\text{height (m)}]^2}$$

Calculation of this index establishes situation of patient's thinness or obesity

< 20	Insufficient weight compares to normal
20 a 25	Normal or grade 0
25 a 29.9	Grade I overweight
30 a 40	Grade II obesity
> 40	Grade III morbid obesity

Body disorders**Obesity****Ethiology of obesity**

It is multifactorial and quite unfamiliar nowadays, but it exists different types of patients with different etiologies.

Genetic causes

Obese sons (10% probabilities & increases 50% & 80%). When both it rises 60% probability to suffer from obesity too.

Metabolic causes

There are several metabolic differences in between thin & fat people.

Psychologic causes

Hunger sensation is objective & appetite is subjective. The rhythm of ingestion is more due to internal than external stimuli. The over ingestion is an induced behaviour by emotional stimuli (anxiety, stress)

Socio cultural causes

Society associates food with social & family celebrations that induce over ingestion of food.

Body disorders

Obesity

Android obesity

Cumul of fat , more often in men



Ginoid Obesity

Cumul of fat in the lowest area of the body, low abdomen, tights and legs



mesoestetic[®]

research
technology
medical experience

cellulishock[®]

CELLULITE ≠ OBESITY

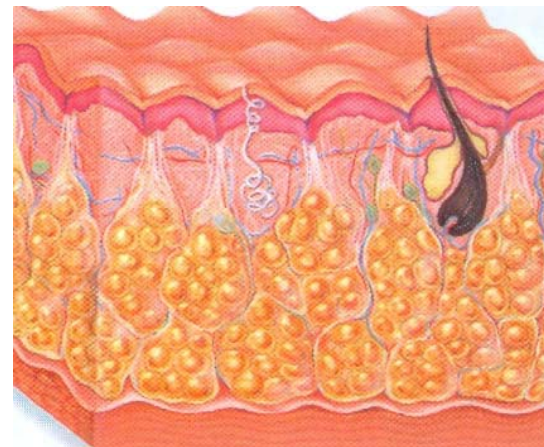
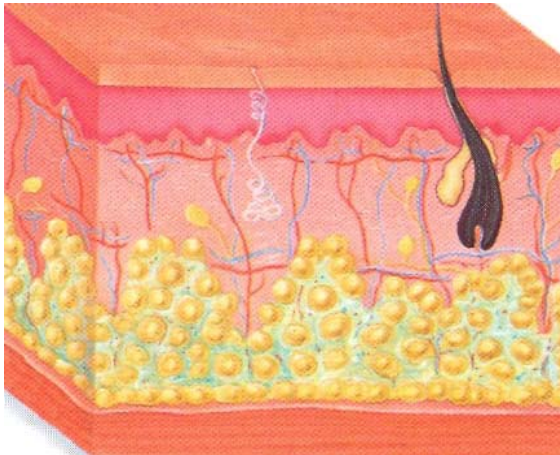


Body disorders

Cellulite

Description

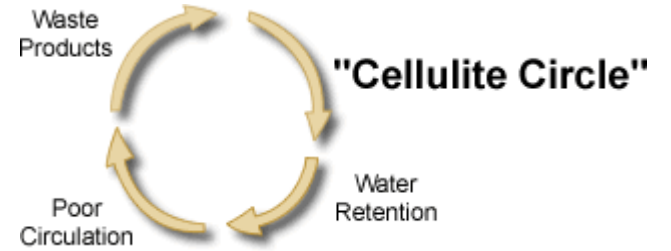
Edemato – fibro sclerotic paniculopathy of subcutaneous fat, which does not only affects fatty cells but also interstitial liquid, and the very most little vessels.



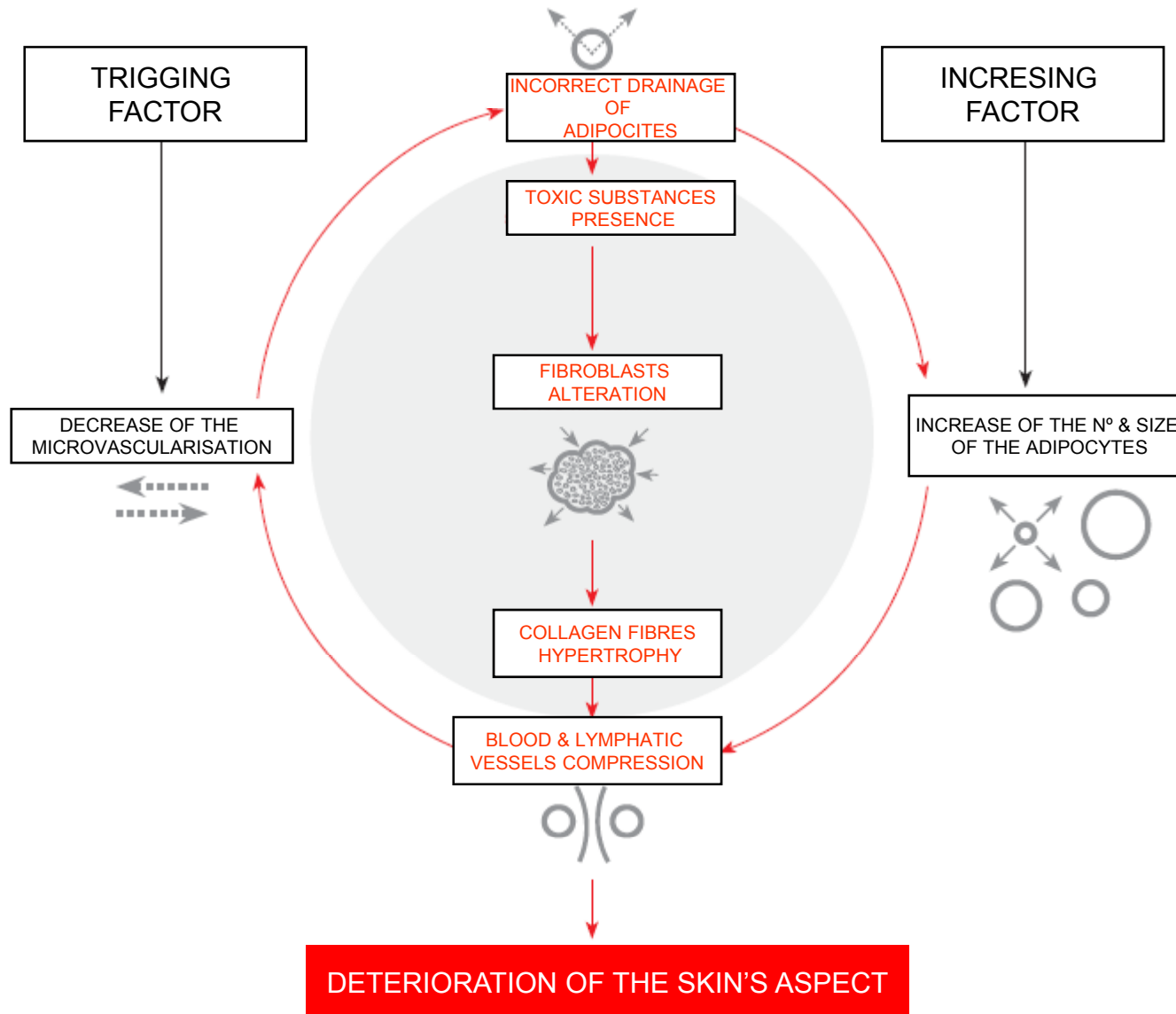
Causes triggering or rising
cellulite



Nature	Factors
Genetics	Genes Age
Hormonal	Puberty Menopause Contraception pills
Deseases	Hipotiroidism Diabetes Liver disorders
Psychologic	Stress Anxiety Depression
Diet habits	Diet hight in carbohidrates & fats Low hydric consumption & and salt excess Coffee consumption
Toxic causes	Alcohol consumption Tobacco Some pharmacologic treatments
Life style	Sedentary life style Lack of sleep Use of proper clothing (tight clothes, high heels...)

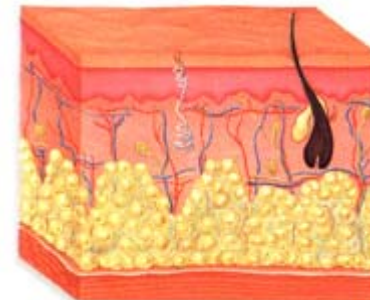
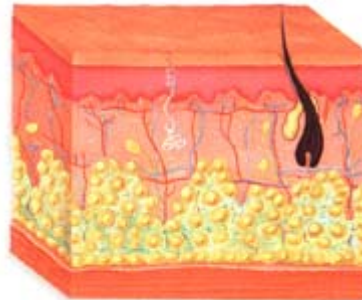
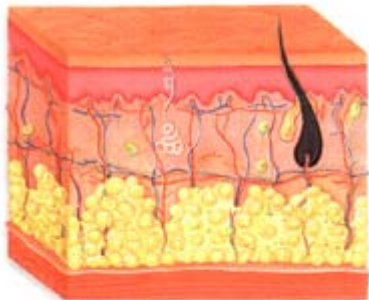


Vicious circle of cellulite



Cellulite Types

	Characteristics	Localization	Profile
Compact & strong cellulite	<ul style="list-style-type: none"> - Granulosum aspect - Strong touch consistency - Dry skin & cold feet - Can be painful 	- External area of buttocks & internal area of knees.	- Young women
Flaccid or soft cellulite	<ul style="list-style-type: none"> - "Orange peel" aspect - Spongiois tissue, lower consistency & movable - Normally it is painless 	- Internal area of buttocks, thighs, abdomen, back & upper arms	<ul style="list-style-type: none"> - More common in women around 40ies - Sedentary people - Major fluctuations in weight
Edematous	<ul style="list-style-type: none"> - Doughy tissue - Liquid retention & venous return flow disorders consequence - Usually painfull 	- Normally located over low members	- Adolescents & young women commonly.



Body disorders

Cellulite

Grades of cellulite

Grade I

=

Edematous or simply congestive phase

Grade II

=

Polimerysation phase

Grade III

=

Fybrotic phase

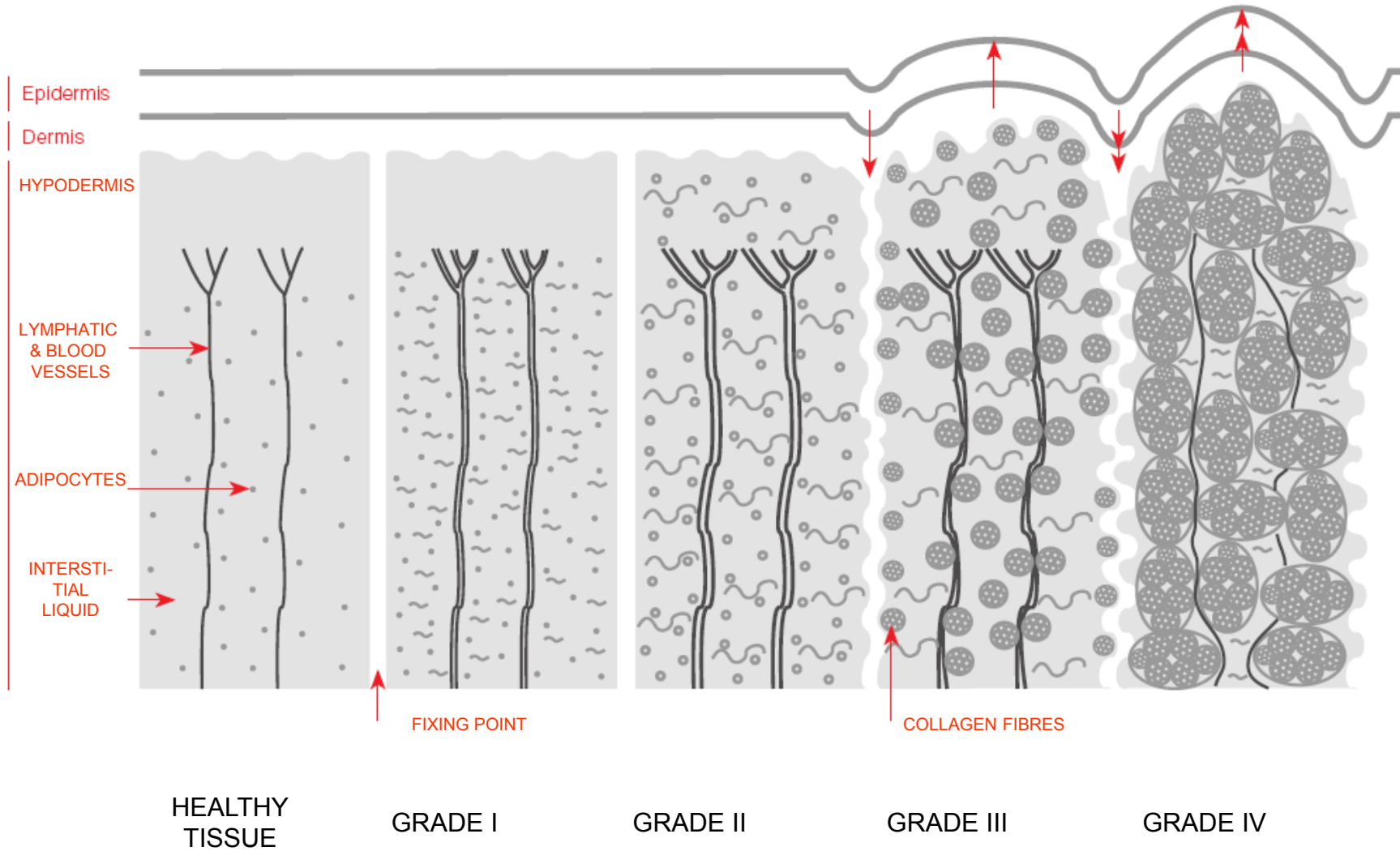
Grade IV

=

Sclerotic phase



Cellulite evolution



mesoestetic[®]

research
technology
medical experience

cellulishock[®]

WHAT IS **cellulishock**[®]

professional treatment

DYNAMIC TREATMENT

- **10 sessions** treatment to fight in a **differentiated** way the different causes of cellulite.
- It adapts as well as for **the type of cellulite** as for the **evolution grade**.

EXPERT TREATMENT allows to the professional **personalizing** the treatment to the specific needs of the client.

MULTI LEVEL TREATMENT

- Acts directly **from three fronts** to break cellulite synthesis & prevent its reappearance.

3 LEVELS OF ACTION

1. Microcirculation



2. Adipose tissue



3. Connective tissue



FRONTAL ATTACK OF THE CELLULITE

3 LEVELS OF ACTION

Frente de actuación	Acción	Resultado
1. Microcirculación	<ul style="list-style-type: none">- Estimulación de la microcirculación- Regulación de la permeabilidad capilar- Acción antiedematosa	<ul style="list-style-type: none">- Mejora de la nutrición y oxigenación de los tejidos
2. Tejido adiposo	<ul style="list-style-type: none">- Lipólisis- Reducción del número y tamaño de los depósitos grasos	<ul style="list-style-type: none">- Disolución de los nódulos grasos- Disminución del contorno del área tratada
3. Tejido conectivo	<ul style="list-style-type: none">- Incremento de la síntesis de elastina y colágeno- Regulación de la proliferación de fibroblastos	<ul style="list-style-type: none">- Reestructuración- Firmeza y elasticidad- Rehidratación

CABINE SESSIONS

I. **Skin preparation**



II. **Intensive phase: dynamic treatment**



III. **Treatment masks**



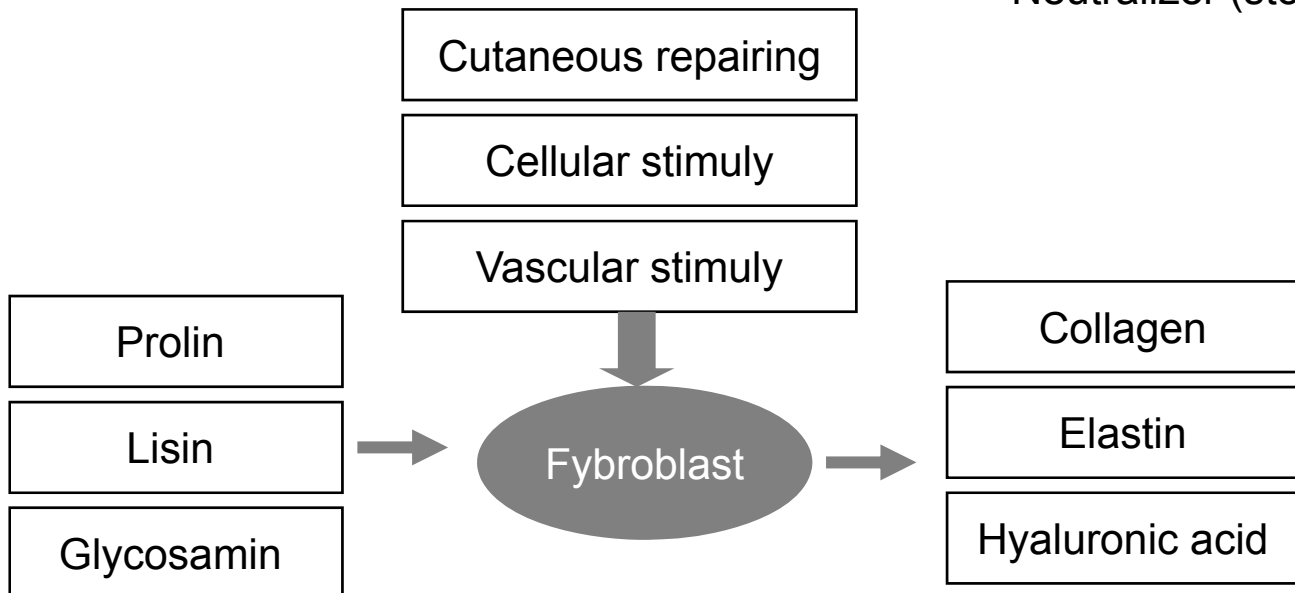
I. Skin preparation

Goal: Increasing the post penetration of the active principles.

cellulishock[®] **body peel** + **post-peel neutralizing spray**

To be applied before sessions 1 & 6

Glycolic chemical peel at 35%
pH: 1,8 / buffered with amino- acids
Neutralizer (stops the acid's activity)



mesoestetic[®]

research
technology
medical experience

cellulishock[®]

I. Preparation of the skin

cellulishock[®] exfoliant scrub

Sessions 2, 3, 4, 5, 7, 8, 9 & 10

Exfoliant emulsion with high lubricating power.

Its micro granules remove dead cells from the surface of the skin & they prepare the skin to absorb active principles from the intensive treatment.

Immediately, the skin recovers its smoothness and softness.

With humectant, and lubricant Glycerin.



II. Intensive phase: DYNAMIC TREATMENT



Activating solution

- + draining principles = draining massage M.L.D.
- + lipolitics principles = reducing massage
- + firming principles = firming massage

= FRONTAL CELLULITE ATTACK

II. Intensive phase: DYNAMIC TREATMENT

cellulishock[®] **draining
effect**

Favors lymphatic massage improving resistance of blood capillaries and decreases its permeability

Increases oxygenation of tissues & facilitates elimination of detritus cumuls

Active principles

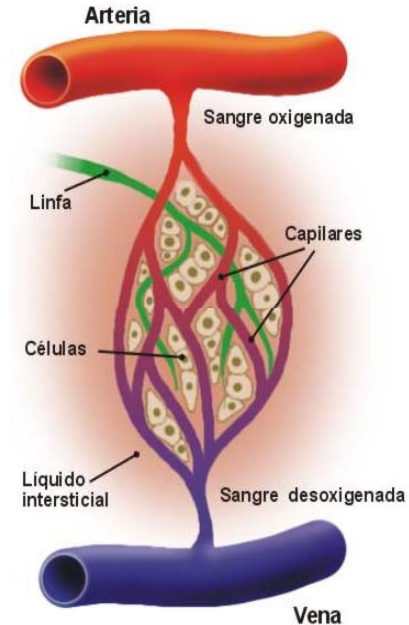
calendula

Lavanda

Beer orange

Bot cypress

Vitamins A & E



mesoestetic®

research
technology
medical experience

cellulishock®



II. Intensive phase: DYNAMIC TREATMENT

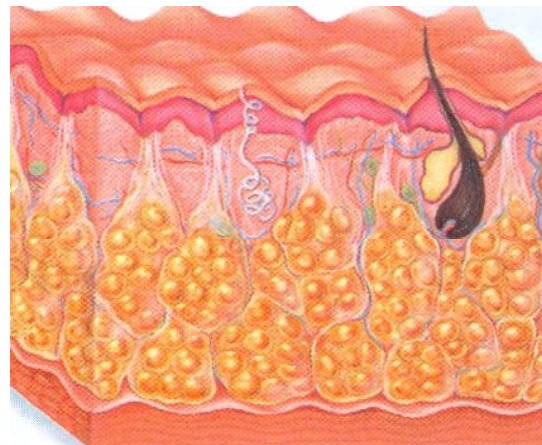
cellulishock® lipolytic
effect

10 units 10 ml monodoses

Reduces n° & size. Helps to reduce the area treated contour.
Its formulation is based on a lipolytic active principles high concentration scientifically proved.

Active principles

- Bot cedar
- Geranium
- Beer orange
- Salvia
- Cafeine
- L- carnitine
- Silica



mesoestetic[®]

research
technology
medical experience

cellulishock[®]

II. Intensive phase: DYNAMIC TREATMENT

cellulishock[®] **firming
effect**

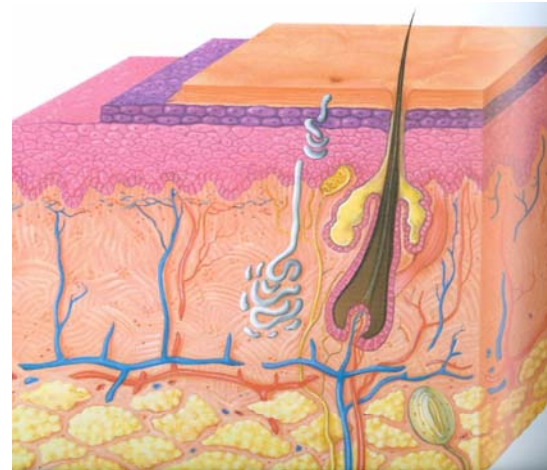
2 units of 3,5 ml drop's counter

Repairs cutaneous alterations induced by cellulite.

The high concentration of firming and regenerant active principles brings back turgency to flaccid areas.

Active ingredients

Sweet almonds
Jojoba
Lemon
Lemongrass
Orange
Vitamins A & E



mesoestetic®

research
technology
medical experience

cellulishock®

II. Intensive phase: DYNAMIC TREATMENT

cellulishock® active
solution

250 ml

Oil solution developed to transfer the dynamic treatment **cellulishock®**.

Its high lubricant power facilitates massage and allows a deep penetration of the actives.

Produces and increase of the temperature of the treated area which activates the lipidic metabolism.

Active ingredients

Jojoba
Sweet almonds
Sesam
Ylang – Ylang
Vitamin E



TREATMENTS PROTOCOLS

Protocol tipe 1:

SESSIONS	body peel	exfoliant scrub	active solution	draining effect	lipolytic effect	firming effect
	50 ml	200 ml	250 ml	50 ml	10 x 10 ml	2 x 3,5 ml
1	25 ml		25 ml	10 ml	10 ml	
2		25 ml	25 ml	10 ml	10 ml	
3		25 ml	25 ml	10 ml	10 ml	
4		25 ml	25 ml	5 ml	10 ml	
5		25 ml	25 ml	5 ml	10 ml	
6	25 ml		25 ml	5 ml	10 ml	
7		25 ml	25 ml	5 ml	10 ml	25 drops
8		25 ml	25 ml		10 ml	25 drops
9		25 ml	25 ml		10 ml	25 drops
10		25 ml	25 ml		10 ml	25 drops

TREATMENTS PROTOCOLS

Protocol tipe 2: flaccid cellulite

SESSIONS	body peel	exfoliant scrub	active solution	draining effect	lipolytic effect	firming effect
	50 ml	200 ml	250 ml	50 ml	10 x 10 ml	2 x 3,5 ml
1	25 ml		25 ml	10 ml		10 drops
2		25 ml	25 ml	10 ml		10 drops
3		25 ml	25 ml	10 ml	20 ml	10 drops
4		25 ml	25 ml	10 ml	20 ml	10 drops
5		25 ml	25 ml	10 ml	20 ml	10 drops
6	25 ml		25 ml		20 ml	10 drops
7		25 ml	25 ml		20 ml	10 drops
8		25 ml	25 ml			10 drops
9		25 ml	25 ml			10 drops
10		25 ml	25 ml			10 drops

TREATMENTS PROTOCOLS

Protocol tipe 3: edematous cellulite

SESSIONS	body peel	exfoliant scrub	active solution	draining effect	lipolytic effect	firming effect
	50 ml	200 ml	250 ml	50 ml	10 x 10 ml	2 x 3,5 ml
1	25 ml		25 ml	5 ml	10 ml	
2		25 ml	25 ml	5 ml	10 ml	
3		25 ml	25 ml	5 ml	10 ml	
4		25 ml	25 ml	5 ml	10 ml	
5		25 ml	25 ml	5 ml	20 ml	
6	25 ml		25 ml	5 ml	20 ml	
7		25 ml	25 ml	5 ml	20 ml	25 drops
8		25 ml	25 ml	5 ml		25 drops
9		25 ml	25 ml	5 ml		25 drops
10		25 ml	25 ml	5 ml		25 drops

mesoestetic®

research
technology
medical experience

cellulishock®

III. TREATMENTS MASKS

3 body masks with differentiated actions, specifically developed to boost the draining, lipolytic & firming effects of the dynamic treatment, completing its action.

cellulishock®

draining mask

cellulishock®

firming mask

cellulishock®

lipolytic mask

mesoestetic®

research
technology
medical experience

cellulishock®

III. TREATMENTS MASKS

cellulishock®

draining mask

1 kg

A refreshing mask with a strong draining & venotonic action , concived to complete the dynamic treatment of cellulishock® on people affected by a disorder of microcirculation & liquid retention.

Active ingredients

Escin

Asian Centella

draining plant extract complex



mesoestetic[®]

research
technology
medical experience

cellulishock[®]

III. TREATMENTS MASKS

cellulishock[®]

lipolytic mask

1 kg

Hot effect mask with specific active ingredients selected to increase the fat dilution.

Active ingredients

Caffeine

Organic Silica

L-carnitine

Lipolitic plant extract complex



mesoestetic[®]

research
technology
medical experience

cellulishock[®]

III. TREATMENTS MASKS

cellulishock[®]

firming mask

2 kg

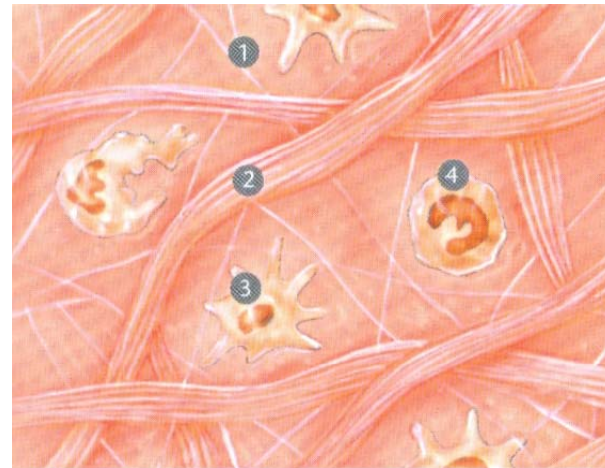
Alginate mask designed to fight against flaccidity caused by cellulite. Its restructurant actives bring back firmness & elasticity to the tissues.

Active ingredients

Spirulin

Lamina digitata

Lithothamnium calcareum



SUMMARY OF THE TREATMENT'S PROTOCOL

phase	Products	Comments
Step I: Skin preparation	<p>cellulishock[®] body peel + cellulishock[®] post-peel neutralizing spray cellulishock[®] exfoliant scrub</p>	<p>Sessions 1 & 6. Time of activity : 10 minutes max.</p> <p>Sessions 2, 3, 4, 5, 7, 8, 9 & 10. Massage time: 10 minutes</p>
Step II: Intensive phase	<p>cellulishock[®] draining effect cellulishock[®] lipolytic effect cellulishock[®] firming effect cellulishock[®] active gel</p>	<p>Evaluate amount of active principles regarding cellulite evolution</p> <p>Massage time: between 30 & 45 minutes</p>
Step III: Mask	<p>cellulishock[®] draining mask cellulishock[®] lipolytic mask cellulishock[®] firming mask</p>	<p>Choose depending on the disired activity. Time of activity: 20 minutes</p>

mesoestetic[®]

research
technology
medical experience

cellulishock[®]

HOME

MAINTENANCE

TREATMENT

mesoestetic[®]

research
technology
medical experience

cellulishock[®]

HOME MAINTENANCE TREATMENT

cellulishock[®] ion lipolytic



6 **MICRO ELECTRONIC PATCHES** combined with a very high concentrated reducing & firming active ingredients.

Every patch auto generates micro impulses that allow penetration of the lipolytic gel active principles by iontophoresis (electrorepulsion between charges of the same sign).

The most effective solution to boost at home the lipolytic effects of the dynamic treatment.

6 patches

+ 5 8 ml ion lipolytic gel **monodoses**

+ 5 8 ml de Phytoactive monodoses

mesoestetic®

research
technology
medical experience

cellulishock®

HOME MAINTENANCE TREATMENT

cellulishock® ion lipolytic

Active ingredients : ion lipolytic gel:

Organic Silica: oligoelement with lipolytic, reestructurant & collagen protective properties.

Caffeine: reductor active which eliminates fatty deposits, inhibiting fats synthesis process.

L-Carnitine: toning amino acid with lipolytic properties scientifically proved efficiency.

mesoestetic[®]

research
technology
medical experience

cellulishock[®]

HOME MAINTENANCE TREATMENT

cellulishock[®] **ion lipolytic**



The treatment is completed with the application of one **Phytoactive** monodose which favors the elimination of toxins & dissolves cellulite nodes, bringing elasticity to the skin.

Active substances of Phytoactive:

Plant extracts of Hiedra, Ruscus & horse tail: with draining & anti edematous properties.

Metyl Nicotinate: Activates peripheral blood circulation. Hiperemiant effect.

mesoestetic[®]

research
technology
medical experience

cellulishock[®]

HOME MAINTENANCE TREATMENT

Grascontrol

Nutritional supplements taking care of the internal metabolism, helping digestive processes and controlling weight gain.

Active substances:

Artichoke extract: favors digestive and depurative functions.

L-Carnitine: promotes energy expense by the organism.

Garcinia: Atenuates fat cumul in the adipose tissue. Produces a satiating effect.

Probiotics: Contributes to the bacterial intestinal flora balance y boosts the immunological system.

Prebiotics: promotes the development of a healthy intestinal microflora.



mesoestetic®

research
technology
medical experience

cellulishock®

HOME MAINTENANCE TREATMENT

liposlim cellulite cream

200 ml

Prevents fatty nodes synthesis, attenuates already established cutaneous nodes, reducing “orange peel effect and reduces water retention.

Active principles:

Iodoate: favors vaso active substances production.

Indian Chesnut: tones capillaries.

Horse tail: strong draining capacity.

Fucus: rich in mineral salts, improves capillaries tonus.

Caffeine: Activates again lipolysis process.



mesoestetic[®]

research
technology
medical experience

cellulishock[®]

HOME MAINTENANCE TREATMENT

body sculpting gel

200 ml

Mould figure, promotes metabolic activity of adipose cells, removing water retention and increasing capillary resistance.

Active substances:

Iodothrate: favors vasoactive substances production.

Indian Chesnut: Increases vessels resistance.

Asian Centella: stimulates collagen production, improves microcirculation, healing.

Caffeine: reactivates lipolysis process.



mesoestetic[®]

research
technology
medical experience

cellulishock[®]

HOME MAINTENANCE TREATMENT

mesofirming gel

200 ml

Brings firmness to the skin. Strenghtens epidermis structure increasing its turgency. At the same time moist gives nutrition, prevents skin deterioration, improving its elasticity and and aspect.

Active substances:

Liposomated Borrage oil: strong emolient with eudermic properties.

Amniotic liquid: tensor

Mucopolysaccharides: reestructurant

Placenta: stimulates cellular renovation.

Collagen: regenerator

Elastin: flexibility



mesoestetic®

research
technology
medical experience

cellulishock®

HOME MAINTENANCE TREATMENT



Contains aromatherapy complex with decongestive and firming action. Counter rests the heavy legs sensation thanks to its refreshing, toning, un tiring toning, revitalizing. Also, moist deeply the skin, fighting descumation and scalping

Active substances:

Essencial oils

Plant extracts

Anti oxidant, hydrating & queling actives

1 200 ml tube

mesoestetic[®]

research
technology
medical experience

cellulishock[®]

Thank you for your attention

